

Boundary Review Committee Meeting #2

December 10, 2019



Boundary Review Team

Jeff Voeller, *District Director of Operations*

Jed Roberts, *FLO Analytics Project Manager*

Jenna Putnam, *FLO Analytics Mapping Technician*

Tonight's Agenda

[0:00]	Review agenda and meeting minutes (led by FLO/District)
[0:10]	Review follow-up items from last meeting (led by FLO/District)
[0:15]	Update on School Board of Trustees activities (led by District)
[0:25]	Presentation on district geography, including existing boundaries and student attendance patterns (led by FLO)
[0:40]	Presentation of springboard proposal (led by FLO)
[1:00]	Break
[1:10]	Discussion of boundary scenario modeling logistics and consensus decision-making approach (led by FLO)
[1:30]	Break into mapping workgroups and practice running scenarios
[2:00]	Adjourn

Follow-up Items

- Residence-attendance matrix for magnet overlay zones
- Residence-attendance matrix with force transfers included
- Reasons for “don’t know/refused” responses in community surveys
 - “In the case of "Beyond keeping your child safe" we feel that the high number of "I don't know" responses is because in their mind safety is the number one issue and they have no other suggestions or ideas beyond that.
 - When respondents did not want to answer we feel that they just left the question/response blank. So when they answered that they did not know, it is probably because they do not have the knowledge or the information to provide a response.
- Borah had a low rate of survey response – how to get a sense of issues important to them?

Residence-Attendance Matrix w/ Magnet Overlays

School of Attendance Attendance Area/Overlay	Residence Count	Atlas ES	Borah ES	Bryan ES	Dalton ES	Fernan STEM	Hayden Meadows ES	NW Expedition Academy	Skyway ES	Winton ES	Ramsey Magnet School	Sorensen Magnet School	Transfer Out Student Total	Transfer Out Rate
Atlas ES (no overlay)	570	442	1	1	13	4	10	9	24	4	58	4	128	22.4%
Atlas ES (Ramsey overlay)	103	60	2	1	2	4	1	1	1	1	30	0	73	70.9%
Borah ES	458	2	302	14	27	32	3	1	4	5	48	20	156	34.1%
Bryan ES (no overlay)	413	1	4	293	23	18	0	8	2	7	22	34	119	28.8%
Bryan ES (Sorensen overlay)	129	0	1	53	1	6	0	0	0	5	3	61	69	53.5%
Dalton ES	377	5	1	1	321	5	8	4	4	4	10	14	56	14.9%
Fernan STEM (no overlay)	366	0	9	23	4	261	1	0	1	6	15	46	105	28.7%
Fernan STEM (Sorensen overlay)	97	0	1	3	0	37	0	0	0	0	0	56	41	42.3%
Hayden Meadows ES	484	5	1	1	20	1	426	12	6	1	9	2	58	12.0%
NW Expedition Academy	294	11	1	0	12	1	19	235	3	3	9	0	59	20.1%
Skyway ES (no overlay)	668	29	0	4	5	8	9	3	505	2	80	23	163	24.4%
Skyway ES (Ramsey overlay)	127	6	0	0	1	1	0	1	71	1	44	2	83	65.4%
Winton ES (no overlay)	455	3	9	3	7	23	3	0	7	324	56	20	131	28.8%
Winton ES (Ramsey overlay)	508	15	5	2	8	9	3	0	10	120	331	5	177	34.8%
Winton ES (Sorensen overlay)	41	0	1	0	0	0	0	1	0	16	2	21	20	48.8%
K-5 Subtotals	5,090	579	338	399	444	410	483	275	638	499	717	308	--	--
Out of District	75	13	2	3	0	10	7	6	6	4	19	5	--	--
K-5 Totals	5,165	592	340	402	444	420	490	281	644	503	736	313	--	--
Transfer In Student Total	1,513	150	38	109	123	159	64	46	139	179	331	175	--	--
Transfer In Rate	29.3%	25.3%	11.2%	27.1%	27.7%	37.9%	13.1%	16.4%	21.6%	35.6%	45.0%	55.9%	--	--

All values based on the 10/15/2019 Student Information System.

Residence counts are based on current attendance area boundaries, as of the 2019-20 school year.

Residence-Attendance Matrix w/ Force Transfers

<div> <div>School of Attendance</div> <div>Attendance Area</div> </div>	Residence Count	Atlas ES	Borah ES	Bryan ES	Dalton ES	Fernan STEM	Hayden Meadows ES	NW Expedition Academy	Skyway ES	Winton ES	Ramsey Magnet School	Sorensen Magnet School	Transfer Out Student Total	Transfer Out Rate
Atlas ES	673	502	3	2	15	8	11	10	25	5	88	4	171 (8)	25.4%
Borah ES	458	2	302	14	27	32	3	1	4	5	48	20	156 (1)	34.1%
Bryan ES	542	1	5	346	24	24	0	8	2	12	25	95	196	36.2%
Dalton ES	377	5	1	1	321	5	8	4	4	4	10	14	56 (3)	14.9%
Fernan STEM	463	0	10	26	4	298	1	0	1	6	15	102	165	35.6%
Hayden Meadows ES	484	5	1	1	20	1	426	12	6	1	9	2	58 (16)	12.0%
NW Expedition Academy	294	11	1	0	12	1	19	235	3	3	9	0	59 (12)	20.1%
Skyway ES	795	35	0	4	6	9	9	4	576	3	124	25	219 (7)	27.5%
Winton ES	1,004	18	15	5	15	32	6	1	17	460	389	46	544 (37)	54.2%
K-5 Subtotals	5,090	579	338	399	444	410	483	275	638	499	717	308	--	--
Out of District	75	13	2	3	0	10	7	6	6	4	19	5	--	--
K-5 Totals	5,165	592	340	402	444	420	490	281	644	503	736	313	--	--
Transfer In Student Total	1,699	90 (10)	38 (11)	56 (2)	123 (14)	122 (1)	64 (11)	46 (7)	68 (2)	43	736 (25)	313	--	--
Transfer In Rate	32.9%	15.2%	11.2%	13.9%	27.7%	29.0%	13.1%	16.4%	10.6%	8.5%	100.0%	100.0%	--	--

All values based on the 10/15/2019 Student Information System.

Residence counts are based on current attendance area boundaries, as of the 2019-20 school year.

(#) Force transfers

Community Survey Responses by Elementary

- Page 324 of full report
- Question: what should the boundary review committee consider during their work?

RESPONSE	Atlas	Borah	Bryan	Dalton	Fernan	Hayden Meadows	NEXA	Ramsey	Skyway	Sorensen	Winton
Proximity to our home/ walkability	14.4%	19.4%	13.4%	17.1%	13.3%	14.6%	19.6%	10.7%	22.1%	16.7%	8.3%
Future growth	13.7%	2.8%	13.4%	11.4%	10.0%	14.6%	23.5%	12.1%	10.7%	9.7%	8.3%
Class size	16.5%	19.4%	6.1%	9.5%	21.7%	12.2%	9.8%	15.7%	11.4%	6.9%	18.3%
Build new/ more schools	11.5%	0.0%	6.1%	8.6%	10.0%	7.3%	9.8%	7.9%	9.3%	6.9%	10.0%
Same school as they have attended. I do not want them to change	10.8%	8.3%	8.5%	9.5%	6.7%	6.1%	7.8%	3.6%	7.9%	4.2%	3.3%
Safety/ security	7.2%	16.7%	7.3%	4.8%	5.0%	3.7%	5.9%	10.7%	7.9%	1.4%	5.0%
Limit student disruption	8.6%	2.8%	6.1%	10.5%	1.7%	11.0%	9.8%	2.9%	6.4%	4.2%	1.7%
Creating and maintaining neighborhood schools	7.2%	0.0%	6.1%	9.5%	6.7%	4.9%	3.9%	4.3%	7.1%	8.3%	3.3%
Quality of their education	2.2%	8.3%	4.9%	5.7%	5.0%	6.1%	2.0%	8.6%	5.7%	2.8%	5.0%
Diversity/ demographics	0.7%	19.4%	8.5%	4.8%	11.7%	7.3%	5.9%	4.3%	4.3%	13.9%	10.0%
Equal opportunities at all the schools	1.4%	5.6%	9.8%	4.8%	10.0%	2.4%	2.0%	4.3%	7.1%	4.2%	6.7%

Schedule

December 3	Introduction to the boundary review process
December 10	More background info, introduce springboard, start mapping workshop
	<i>--Holiday Break--</i>
January 7	Committee mapping workshop
January 14	Committee mapping workshop
January 21	Open house #1 for public comment on committee's initial boundary proposal
	<i>--Break to reflect on open house comments--</i>
February 4	Committee mapping workshop
February 11	Committee mapping workshop
February 18	Open house #2 for public comment on committee's draft boundary proposal
February 25	Committee mapping workshop to finalize proposal

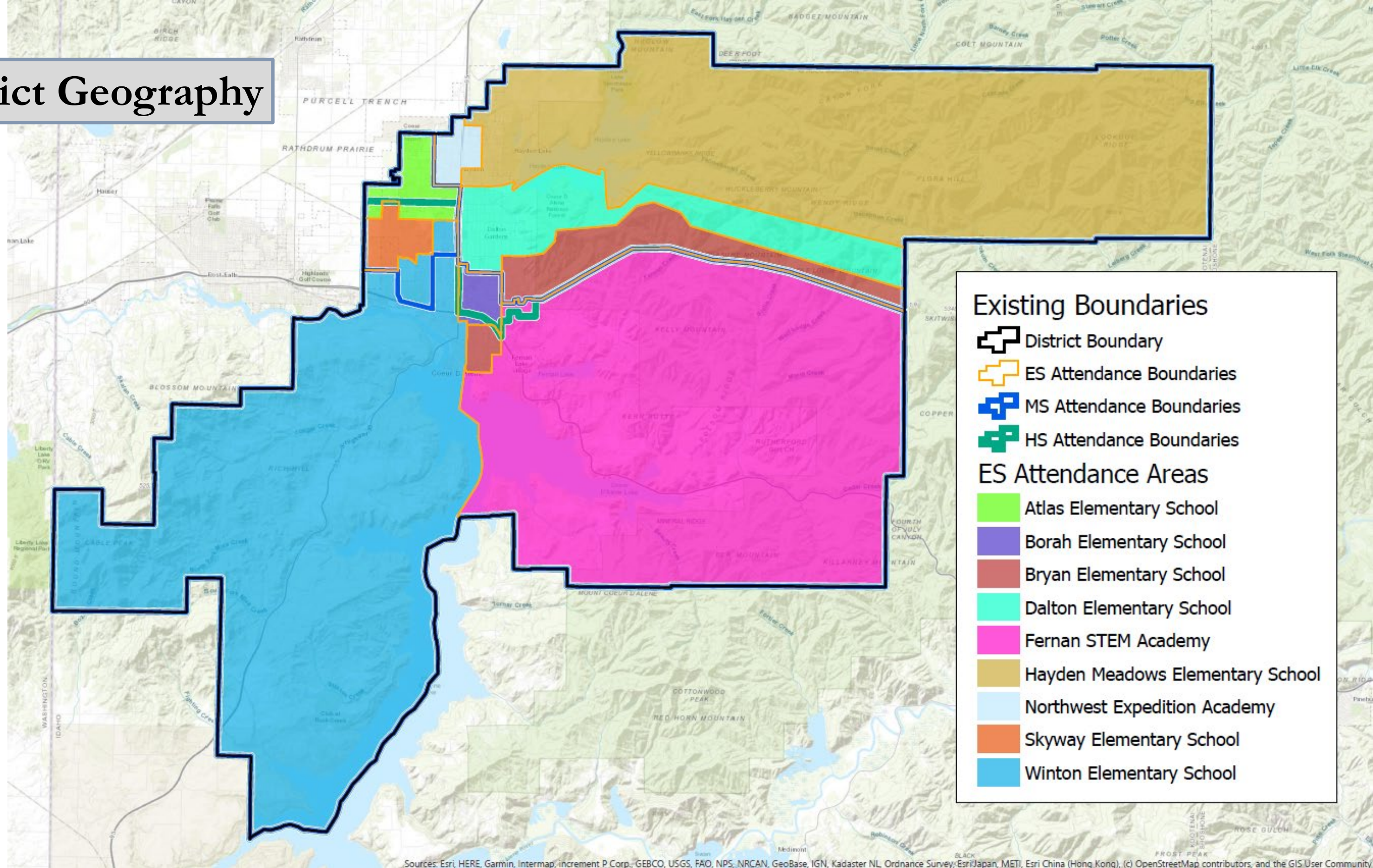
Tonight's Agenda

[0:00]	Review agenda and meeting minutes (led by FLO/District)
[0:10]	Review follow-up items from last meeting (led by FLO/District)
[0:15]	Update on School Board of Trustees activities (led by District)
[0:25]	Presentation on district geography, including existing boundaries and student attendance patterns (led by FLO)
[0:40]	Presentation of springboard proposal (led by FLO)
[1:00]	Break
[1:10]	Discussion of boundary scenario modeling logistics and consensus decision-making approach (led by FLO)
[1:30]	Break into mapping workgroups and practice running scenarios
[2:00]	Adjourn

Tonight's Agenda

[0:00]	Review agenda and meeting minutes (led by FLO/District)
[0:10]	Review follow-up items from last meeting (led by FLO/District)
[0:15]	Update on School Board of Trustees activities (led by District)
[0:25]	Presentation on district geography, including existing boundaries and student attendance patterns (led by FLO)
[0:40]	Presentation of springboard proposal (led by FLO)
[1:00]	Break
[1:10]	Discussion of boundary scenario modeling logistics and consensus decision-making approach (led by FLO)
[1:30]	Break into mapping workgroups and practice running scenarios
[2:00]	Adjourn

District Geography



District Geography

Prairie Ave

Hwy 95

15th St

Also Bryan!

I-90

Ramsey Rd

Gov't Way

I-90

- High Schools
- Middle Schools
- Elementary Schools

Existing Boundaries

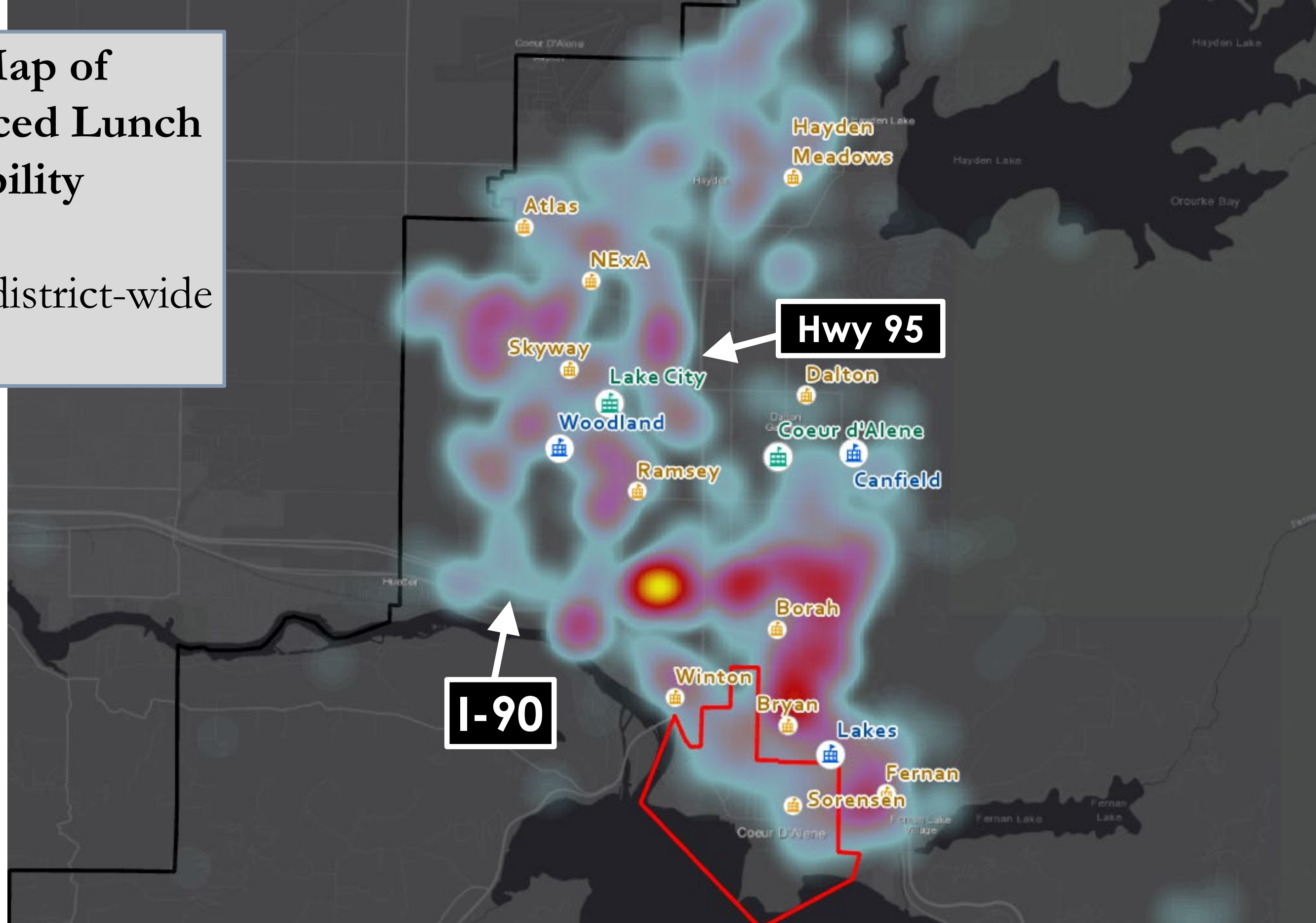
- District Boundary
- ES Attendance Boundaries
- MS Attendance Boundaries
- HS Attendance Boundaries

ES Attendance Areas

- Atlas Elementary School
- Borah Elementary School
- Bryan Elementary School
- Dalton Elementary School
- Fernan STEM Academy
- Hayden Meadows Elementary School
- Northwest Expedition Academy
- Skyway Elementary School
- Winton Elementary School

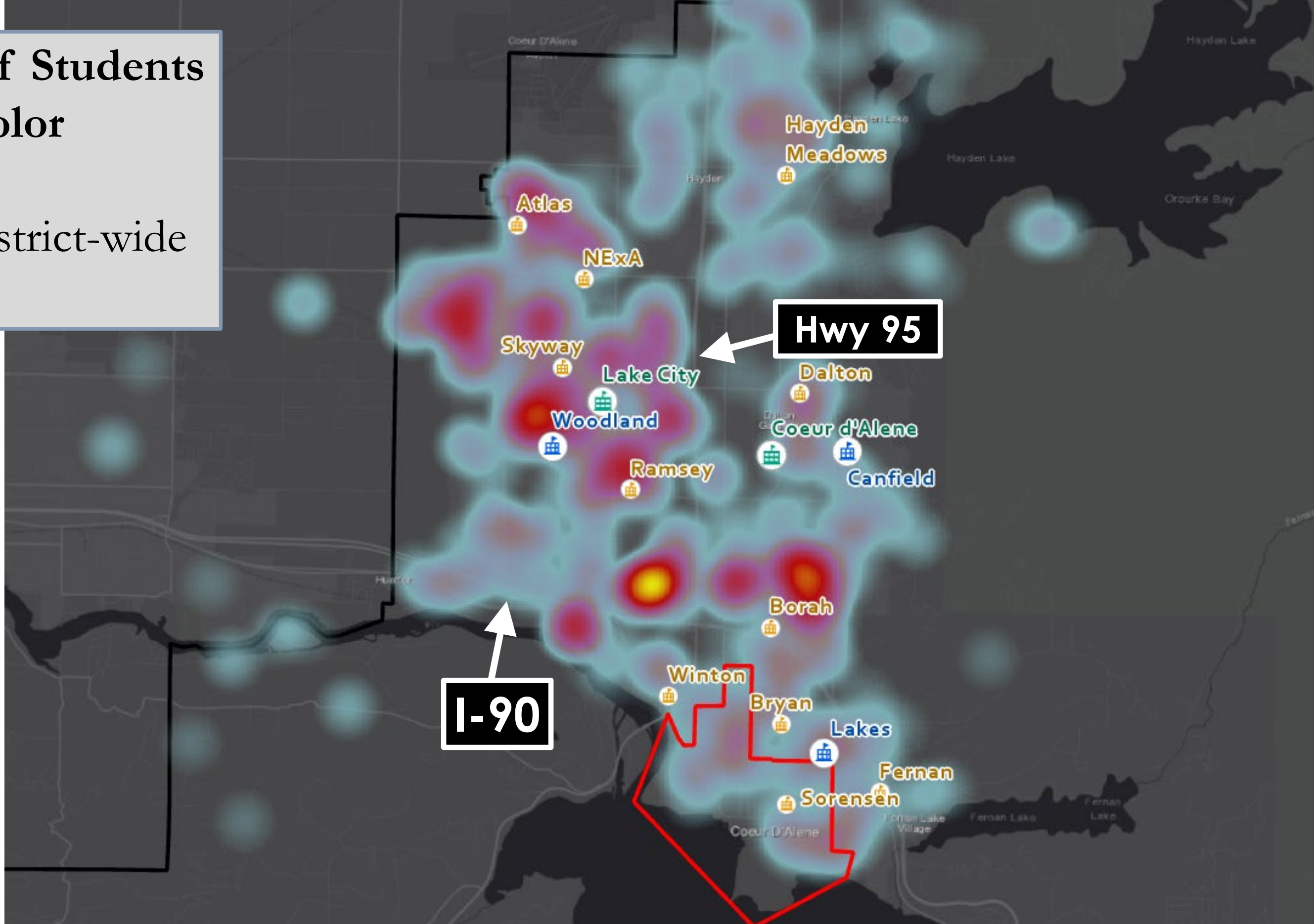
Heat Map of Free/Reduced Lunch Eligibility

- 28.6% of district-wide attendance



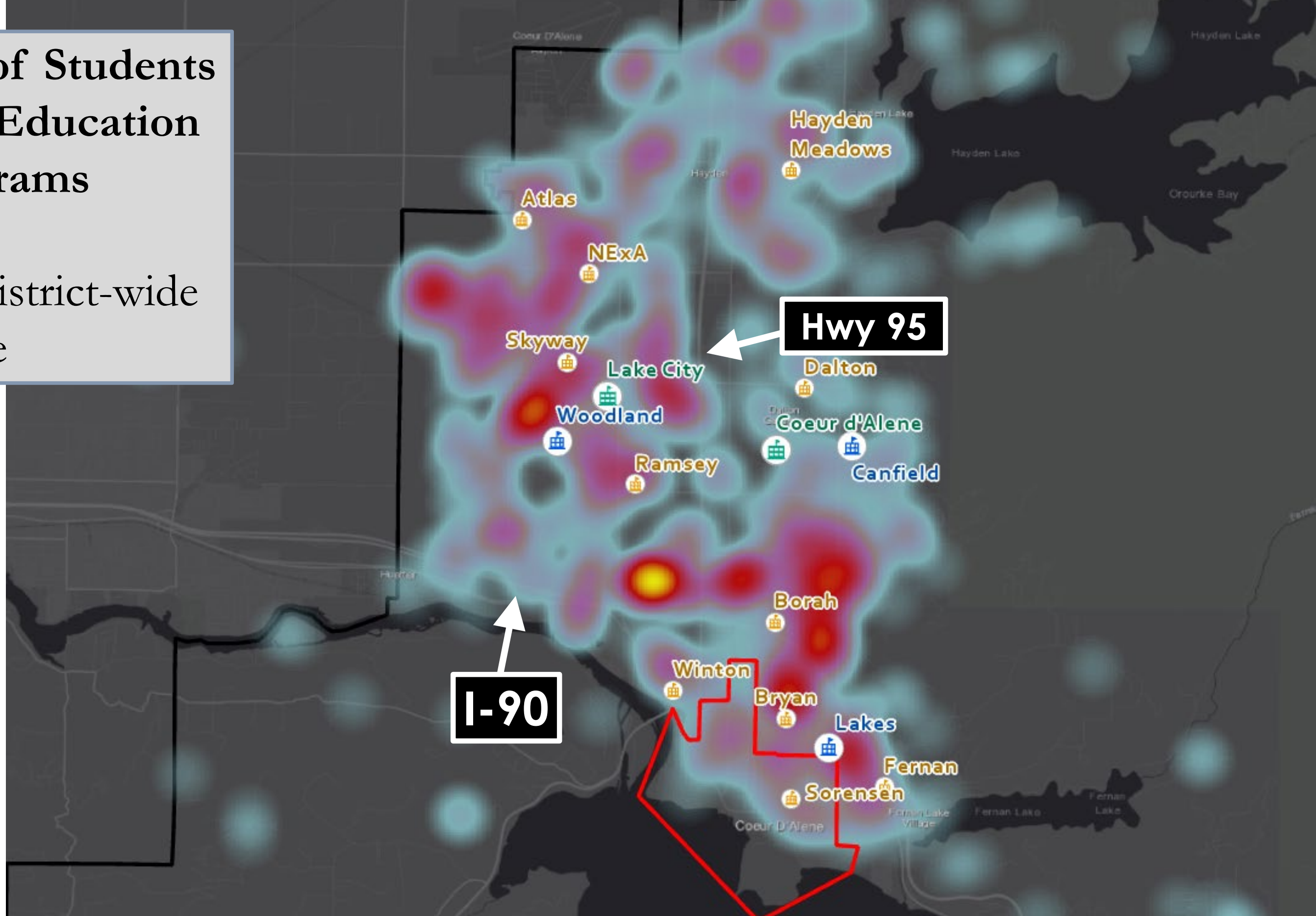
Heat Map of Students of Color

- 7.6% of district-wide attendance



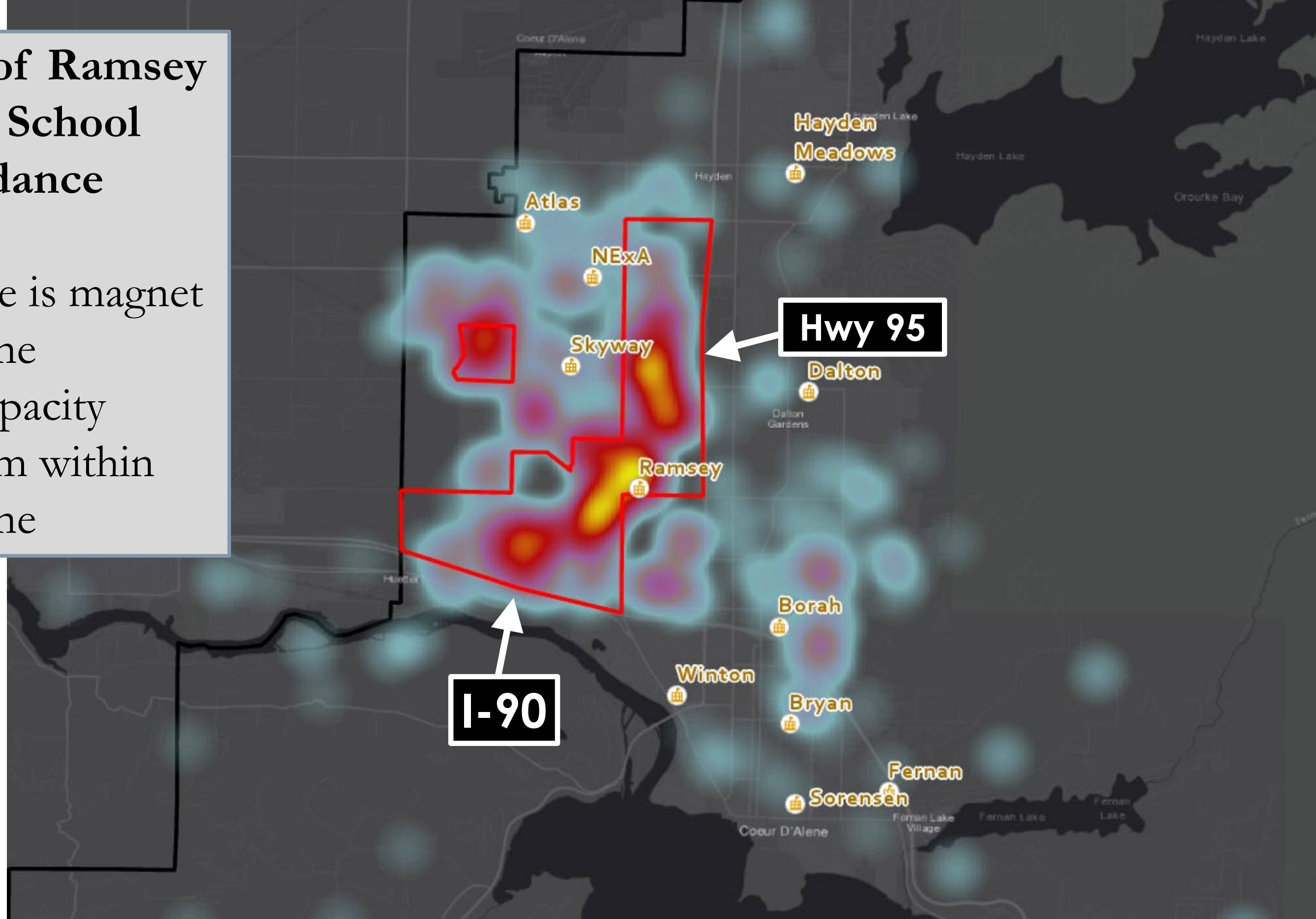
Heat Map of Students in Special Education Programs

- 9.2% of district-wide attendance



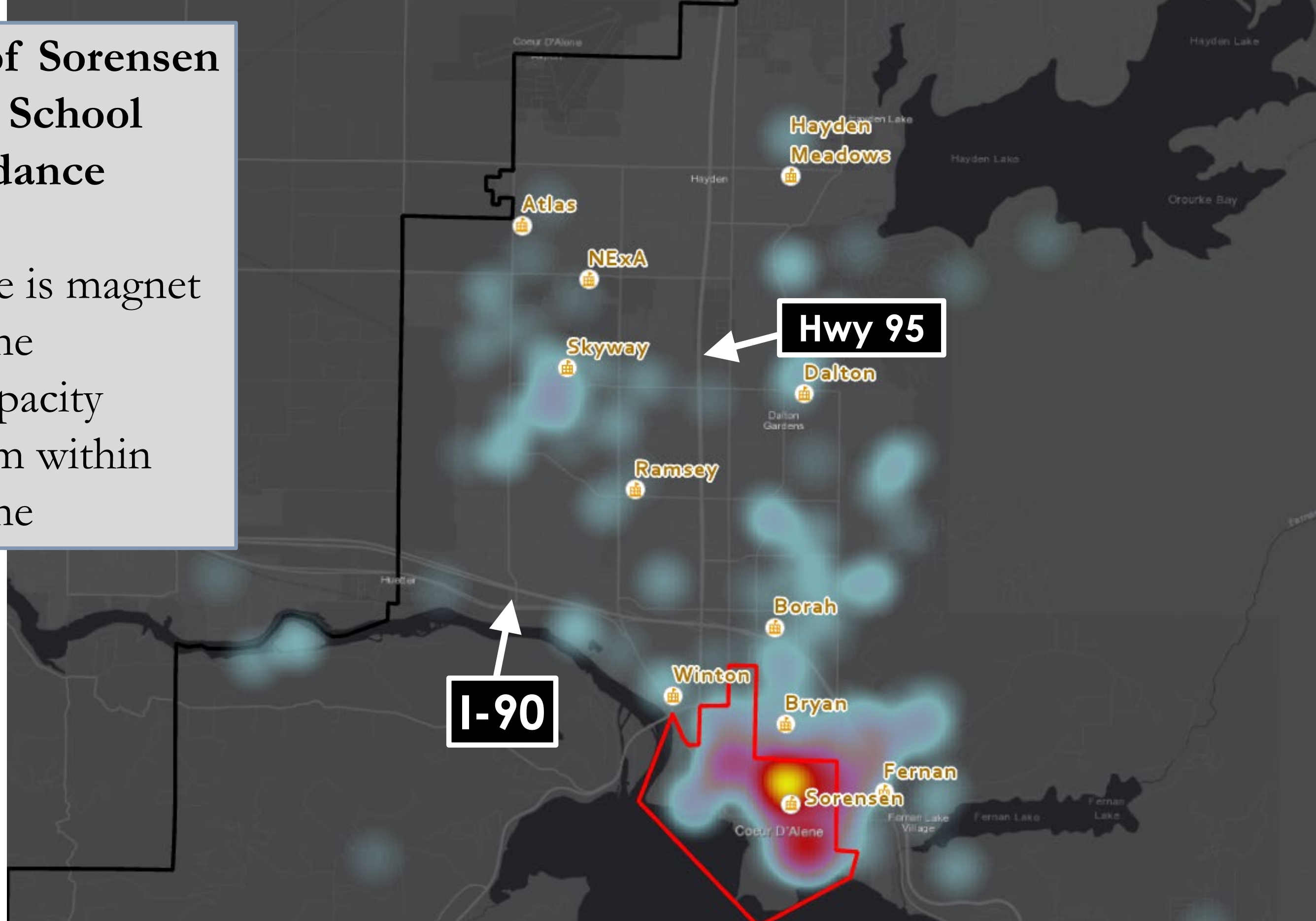
Heat Map of Ramsey Magnet School Attendance

- Red outline is magnet overlay zone
- 71% of capacity comes from within overlay zone



Heat Map of Sorensen Magnet School Attendance

- Red outline is magnet overlay zone
- 44% of capacity comes from within overlay zone



Tonight's Agenda

[0:00]	Review agenda and meeting minutes (led by FLO/District)
[0:10]	Review follow-up items from last meeting (led by FLO/District)
[0:15]	Update on School Board of Trustees activities (led by District)
[0:25]	Presentation on district geography, including existing boundaries and student attendance patterns (led by FLO)
[0:40]	Presentation of springboard proposal (led by FLO)
[1:00]	Break
[1:10]	Discussion of boundary scenario modeling logistics and consensus decision-making approach (led by FLO)
[1:30]	Break into mapping workgroups and practice running scenarios
[2:00]	Adjourn

Guiding Principles Direction from Board

- Assume a new elementary and middle school in western part of the district by 2024
- Plan an attendance area for Ramsey to 50% of its capacity (remaining 50% will come from lottery)
- Do not plan an attendance area for Sorensen (it will continue with an overlay zone and lottery)
- Avoid crossing Highway 95 and I-90 if possible
- Do your best to create a true feeder system
- Don't worry about the boundaries in the unpopulated east

Break

Tonight's Agenda

[0:00]	Review agenda and meeting minutes (led by FLO/District)
[0:10]	Review follow-up items from last meeting (led by FLO/District)
[0:15]	Update on School Board of Trustees activities (led by District)
[0:25]	Presentation on district geography, including existing boundaries and student attendance patterns (led by FLO)
[0:40]	Presentation of springboard proposal (led by FLO)
[1:00]	Break
[1:10]	Discussion of boundary scenario modeling logistics and consensus decision-making approach (led by FLO)
[1:30]	Break into mapping workgroups and practice running scenarios
[2:00]	Adjourn

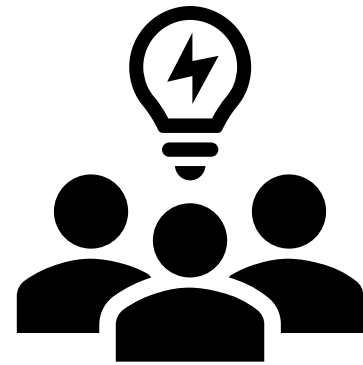
Mapping Workgroup Assignments

Team Blue	Team Green	Team Purple	Team Red	Team Yellow
Karina Selby	Sarah McCracken	Alethea Carpenter	Jodi Johnson	Lauren Gage
Marie Nail	Aimee Moffatt	Deb Nelson	Carl Fulton	Rachel Grady
Rose Backs	Tracy Shull	Kim Stearns	Laura Nelson	Danielle Quade
Kevin McClelland	Jennifer Dawson	Tristan Hite	Lindsey Knoll	Amber Dirksen
Rebecca Smith	Constance Bond	Crystal Kubista	Kristen Gorringer	Kathy Livingston
Kristina Davenport	Jody Hiltenbrandt	Trayce Hemenway	Heather Somers	Lisa Pica
Jennifer Peak	Brett DePew	Bill Rutherford	Eileen Blough	Nick Lilyquist
Mike Lindquist	Libbi Barrett		Deanne Clifford	

Boundary Scenario Model Logistics

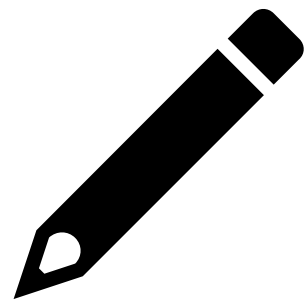
We'll start from elementary and work our way up!

Step 1



**Agree on a scenario with
your workgroup**

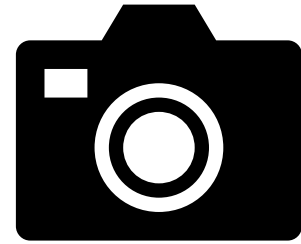
Step 2



**Draw it on your paper map and
let a FLO team member know**

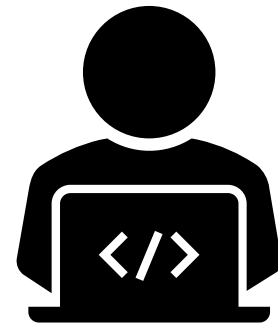
Boundary Scenario Model Logistics

Step 3



**FLO team member will snap
a picture of your scenario**

Step 4



**FLO team member will run
your scenario and print results**

During
Step 4



**Work on another scenario or eat
a snack!**

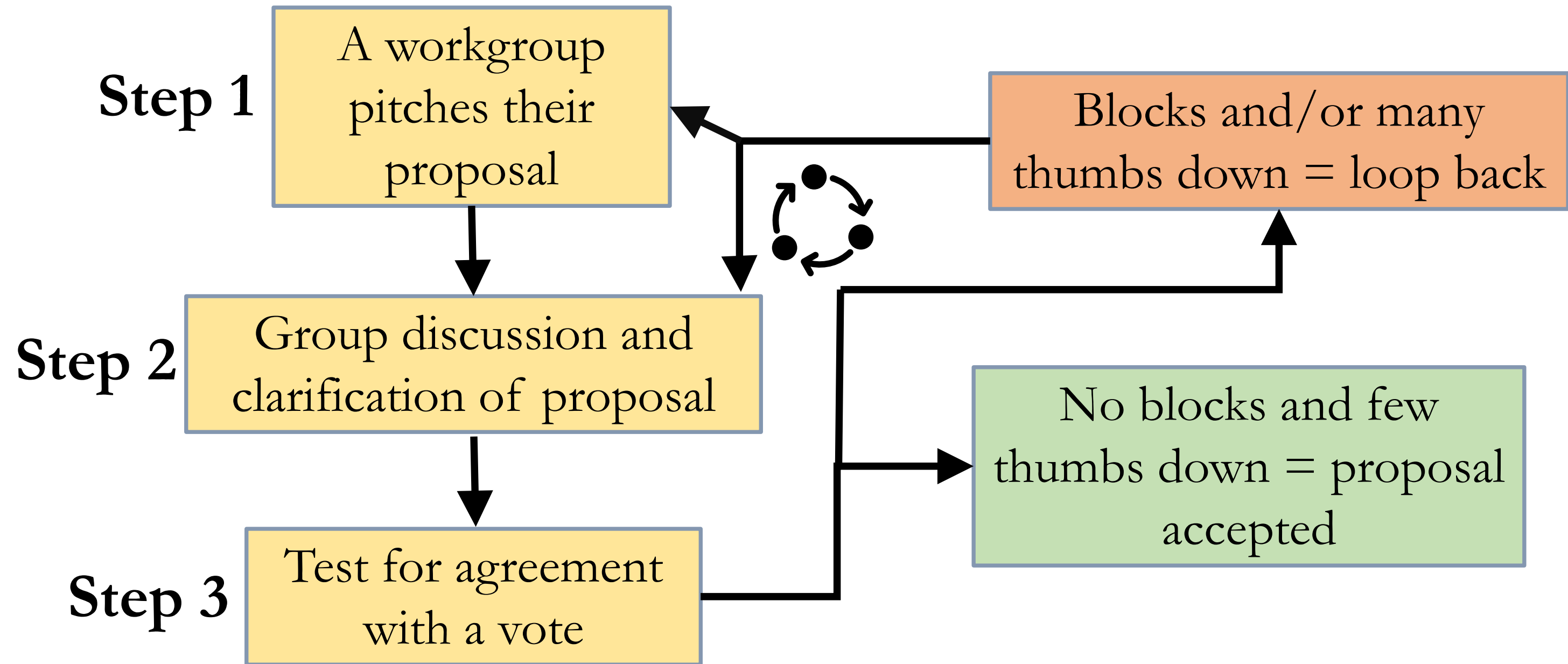
Consensus Model Decision Making

Initial Voting

- ☺ **Thumbs up = Agreement.** “I support this proposal.”
- 😐 **Thumbs sideways = Reservations.** “I still have some problems with the proposal, but I can go along with it.”
- ☹ **Thumbs down = Standing aside.** “I can’t support this proposal, but I don’t want to stop the group.”
- 😡 **Fist = Blocking.** “I have a fundamental disagreement with the core of this proposal that hasn’t been resolved.”

Consensus Model Decision Making

Proposal Process



Mapping Demo